

PRIM. P. ST.
DEPOSIT TURBĂRIE

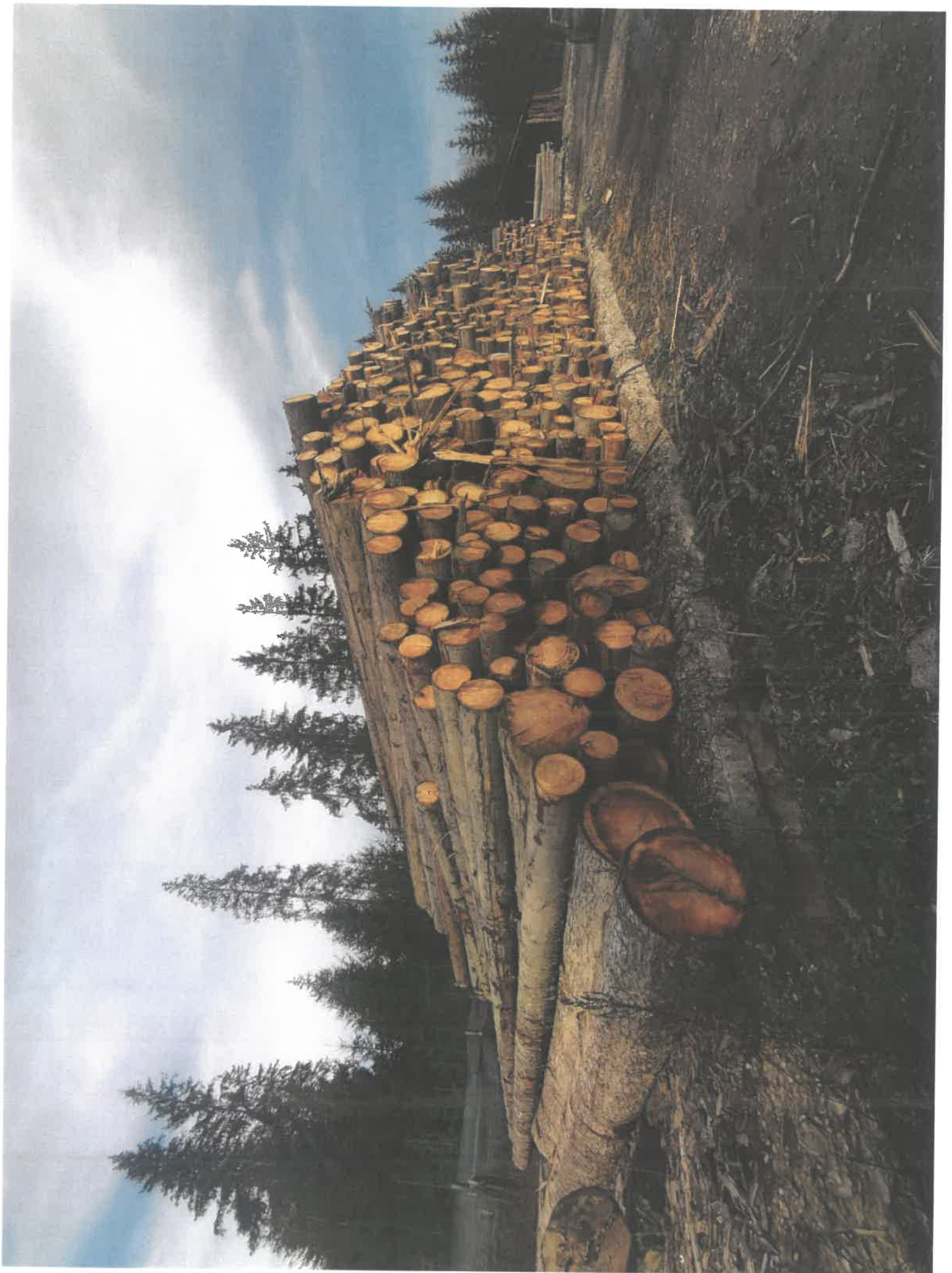
O.S. DOEMA

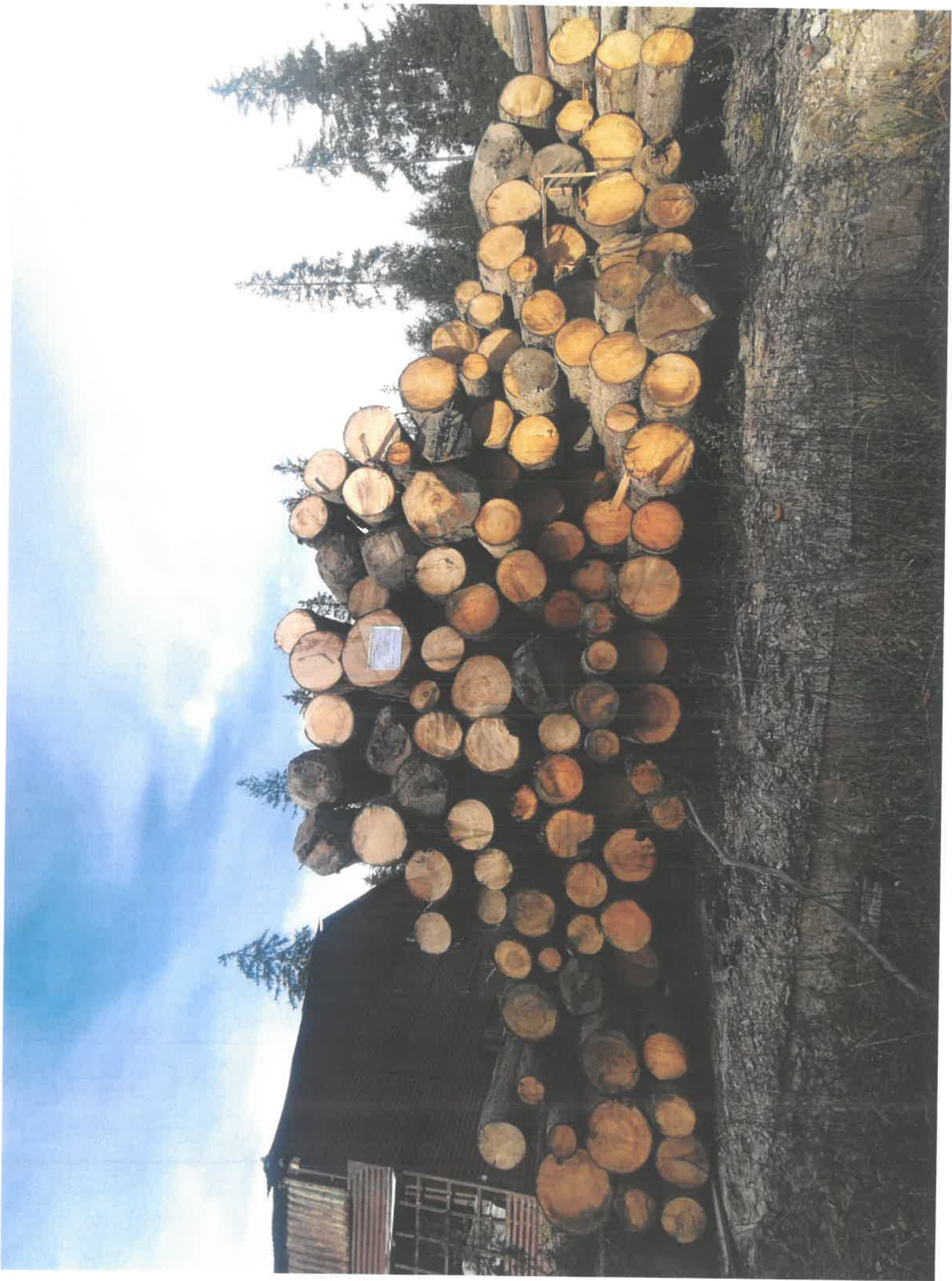
GRUPAJ III

APV 23000196 05420

BRAD	>24	<24	=
MOUD	41,15 m.c.	9,94 m.c.	51,07 m.c.
	142,10 m.c.	55,08 m.c.	65,02 m.c.
	<u>183,23</u>	<u>+ 65,02</u>	<u>= 248,25 m.c.</u>

pod. CHIREAI 0060MM - 0749324 230





PRIM P. ST.

DEPOZIT TURBĂRIE

D. S. DOCHIA

GEVPAJ II

APV 2200019608400

BEAD
MOLIA

> 24

6,40 mc

< 24

15,38 mc

55,62

28,78 +

72,00 =

100,18

pād. CHIRECI BOZOMAN - 0749324230

